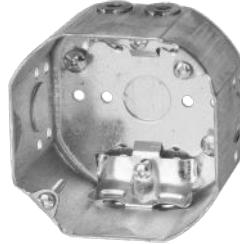
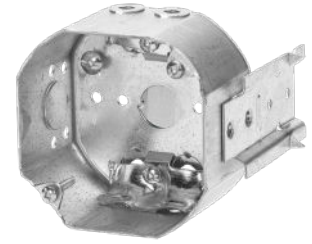




54171K-RT



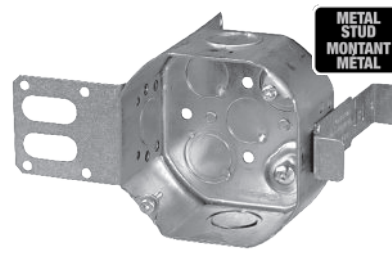
54171L-CRT



54171LB-RT



54171LF-RT



54171KSSX-CRT

METAL  
STUD  
MOUNTANT  
METAL



Cat. No.	Features					Conduit Knockouts		
	Cubic Capacity	Usage	Bracket (See page A3)	Ground Screw Qty.	Raised	Max. Load	Sides	Bottom
54171K-RT	21.0	KO	SSX SSX-1	1	yes	50 lb.	2 x K + 2 x 1/2 in.	2 x K + 2 x 1/2 in.
54171KSSX-CRT							2 x K	
CI54171-KSSX-1							2 x 1/2 in.	
54171L-RT		L / LA	SSX B	2	no	50 lb.	1 x 1/2 in. KO and 8 pryouts	
BC54171-LSSAX							1 x 1/2 in.	
54171LB-RT		L	B	2	yes	35 lb.	2 x K + 2 x 1/2 in. and 8 pryouts	
54171LF-CRT	2 x K + 2 x 1/2 in. and 8 pryouts							

54171LF-CRT is designed for ceiling fan and supplied with 2 #10-32 machine screws and star washers.

Usage: K: Conduit KOs only, L = NMD90 (Loomex, nonmetallic sheathed cable), LA = AC90 (BX, armored cable) Conduit knockouts: K = concentric 1/2 in. and 3/4 in.

Note: CEC 2012 rule 30-302: 4) Where the weight of a luminaire does not exceed 23 kg (50 lb.), the luminaire shall be permitted to be supported by a ceiling outlet box attached directly to the building structure or by a ceiling outlet box attached to a bar hanger.