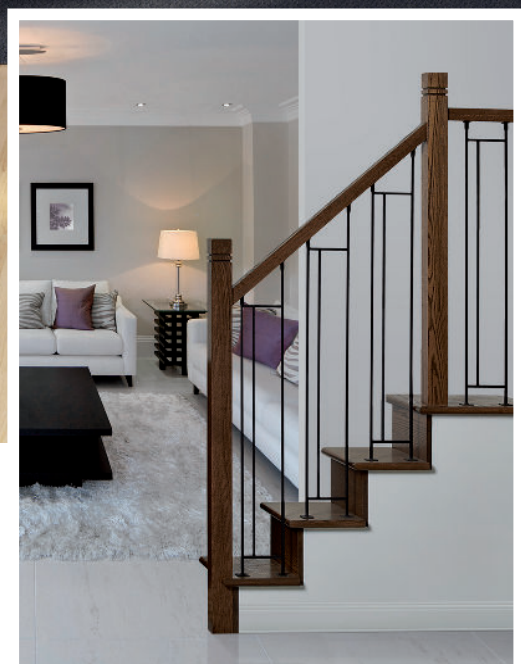


Wrought Iron Urban Balusters

ALEXANDRIA Moulding

Cozy modern with an urban edge.



Moulding to Your Lifestyle
alexandriamoulding.com

Tools and Hardware Required

- Phillips screw driver
- Hand saw
- Level
- Masking tape
- Construction adhesive
- 8 screws per panel baluster
- Caulk

Installation Guide

STEP 1 – Balusters are installed so the distance between each does not exceed 4". There is typically one panel baluster per tread.

STEP 2 – Mark the location of the center of each panel baluster on the stair treads. Refer to Newel Post Installation section for details on constructing a baluster line.

STEP 3 – Before installing panel baluster, ensure the removable cap is on the post. See * TIPS AND TRICKS

STEP 4 – Beginning at the bottom of the staircase, install the panel balusters by affixing them to the treads first with the screws provided.

STEP 5 – Affix the top plate on the short side (attached cap) to the underside of the handrail with the screws provided.

STEP 6 – Affix the top plate on the long side (removable cap) to the underside of the handrail with the screws provided.

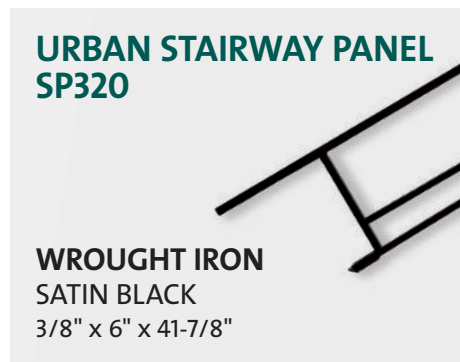
NOTE

Slight handrail angle variation is addressed by the removable cap. The removable cap may be moved up slightly to reach the underside of the handrail however at least half of the length of the cap must remain on the post (overlap).

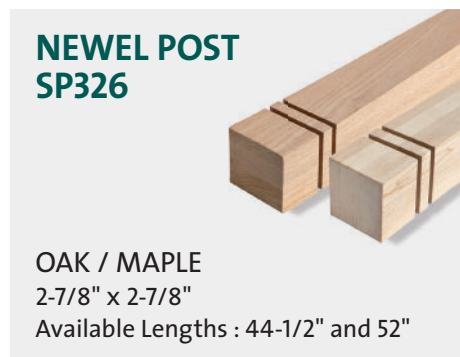
* TIPS AND TRICKS

To prevent potentially rattling of the panel baluster, apply caulk inside the removable cap where it overlaps the post. Remove any excess caulk and allow it to dry properly.

BALUSTERS



SUGGESTED URBAN RAILING COMPONENTS



Stair Parts Installation TIPS AND TRICKS

Scan the QR code to learn how to install handrails and newel posts.

